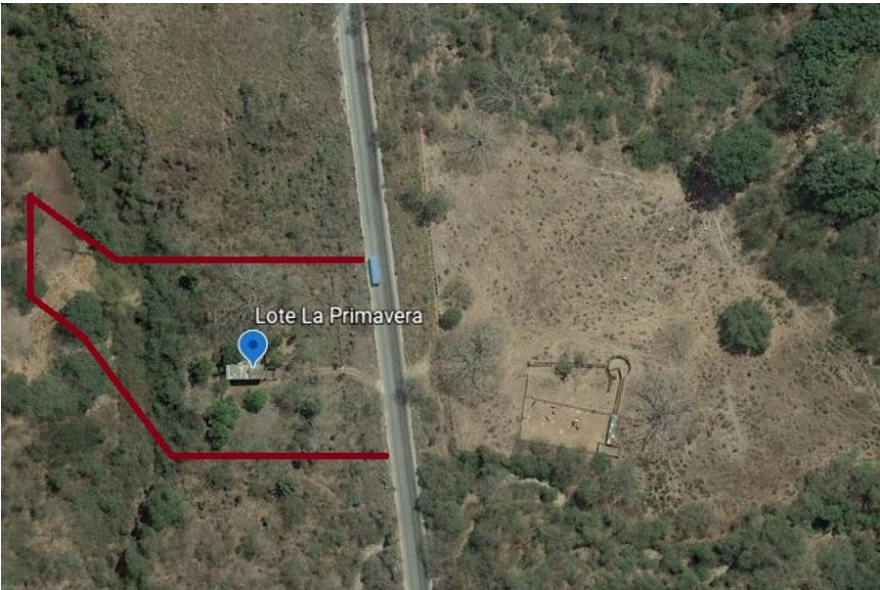


# La Primavera

Carretera Las Palmas Km. 4 , La Primavera

7,000 m2 LND.



Magnificent land suitable for a rest house or industrial use, located 30 minutes from Puerto Vallarta on the way to San Sebastián del Oeste. Availability for services, o'er paved road. On 7,000...

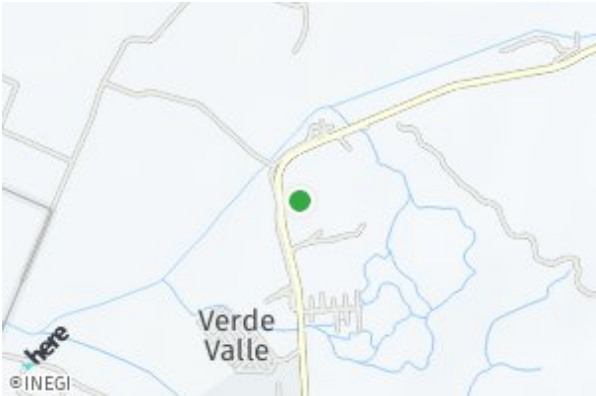
### Features & Amenities

Beach Front	Furnished	Pool	AC
--	--	--	--
Parking	Stories	Year Built	Single Level
--	--	--	--
Elevator	Guest House	Allow Pets	Fire Place
--	--	--	--
Floor	Roof	Tennis	Sewer
--	--	--	--
School	Dues Include		
--	--		
View		Room Types	
--		--	
Appliances			
--			

Price:  
\$645,000 usd

Type:  
Lot

Region:  
Ixtapa



### Agent

**Marile Jurado**  
3222169717  
[marile@c21oceanrealty.com](mailto:marile@c21oceanrealty.com)

### Agency

**Century 21 Ocean Realty**

Calle Quilla 112 L 1B, Marina Vallarta

